



VISUAL STORY FOR NST CAMPUS

This is a visual resource for children and young adults with Autism Spectrum Conditions. This resource is intended to help prepare visitors for their visit to the Nuffield Southampton Theatres' Campus site and to help them become familiar with the surroundings and situation.

These notes are designed in such a way that you can use as little or as much as required in order to prepare yourself for a visit to NST Campus.

It contains information about the building and lots of images to help prepare you if you are curious (or anxious) about your visit, as well as information to help you find your way around the Nuffield Theatre.

Going to the theatre

A visit to the theatre can be an exciting outing, but there are also challenges in such a different environment. The following suggestions from the National Autistic Society could help you to plan ahead and make the trip enjoyable for everyone.

Before your visit

Tell the theatre when you are booking that you have autism or are bringing someone with autism. If there is a chance that you may need some time away from the show during the performance ask for an aisle seat so you can leave the theatre without disturbing other audience members too much.

On the day

- If you use tools to help with sensory issues (eg ear defenders, or fiddle toys) remember to bring them with you.
- If you have an autism awareness card take it with you so you can quietly say to a neighbour why you or the person you are with may be acting a little differently.
- When you arrive if you feel that your seat is not suitable, ask a member of staff if you can sit somewhere else, and explain why (if the show is full this may not be possible so it's always advisable to ask about seating when booking).
- If you need assistance talk to an usher and ask for help. Ushers know when the noisy and quiet parts of the show are and will be able to tell you the best time to leave or return to the auditorium without disturbing others.
- If you or the person you are with will need to go to the toilet, try to leave just before the interval starts, as toilets often get very busy during the interval. You may need to tell the usher you plan to do this before the show starts.
- They will be able to tell you when the interval will start and what stage in the performance would be a good time to leave the auditorium without disturbing other people.

Information about the Nuffield Theatre

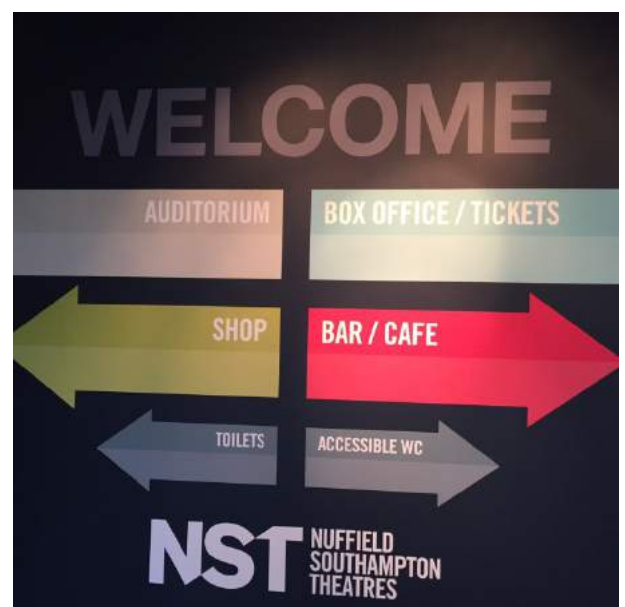
The play is being performed at the Nuffield Theatre. Here are some photos of the outside of the Nuffield Theatre.



The Nuffield Theatre's auditorium (where the play is being shown) is inside the building. When you enter the building through the big glass doors there is a foyer (the waiting area outside the theatre) and the Box Office on the right hand side.



Here is the welcome sign as you come in the glass doors



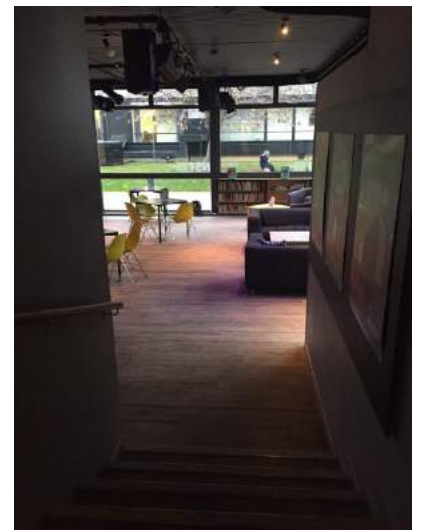
Here are some pictures of the foyer



and here is a picture of the Box Office. The Box Office is a place where you can collect your tickets if you don't already have them. This area will be easy to see as it's just inside when you come through the glass doors into the theatre.



Just along from the Box Office is a café bar called the Nuffield Kitchen where you can buy food and drink before the show and during the interval (the break in the middle of the play).





On the left hand side as you come into the building through the glass doors here is a shop where you can buy sweets and ice creams

These areas can get quite busy before the performance as everyone will be waiting to go into the auditorium to watch the performance.

If you need help or have any questions there are plenty of staff members who can help you. The staff members who check your tickets and help you to find your seat are called ushers. Here is a picture of one of our ushers. There are lots of others.



They all wear a t-shirt that looks like this



Front of the t-shirt



Back of the t-shirt

Toilets

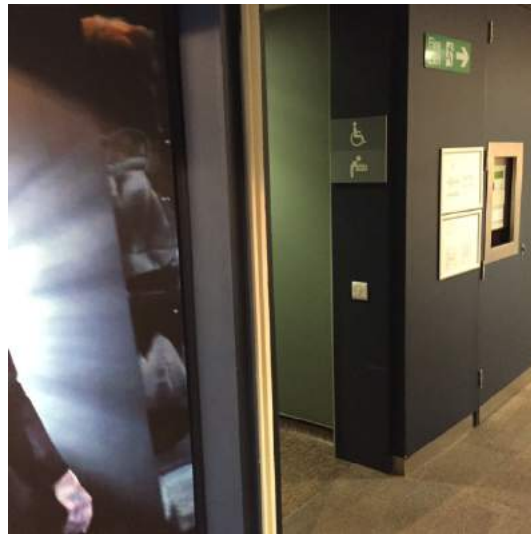
Nuffield has toilets on each side of the building as you go into the auditorium. The girls' toilets are on the side near the shop:



The boys' toilets are on the other side:



There is also a disabled toilet near the Box Office



Inside the Auditorium

The auditorium is the part of the theatre where the audience sit when they are watching the play. Here is a picture of the auditorium (this will be full of people when the performance starts).



There are different levels in the auditorium. You may be sitting very close to the stage or you may be further back and higher up and looking down on the stage. You will have some time before the performance to find your seats and get comfortable before the play begins.

The stage is the area where the actors perform the play to the audience.

Remember if you are in the audience you are not allowed on the stage

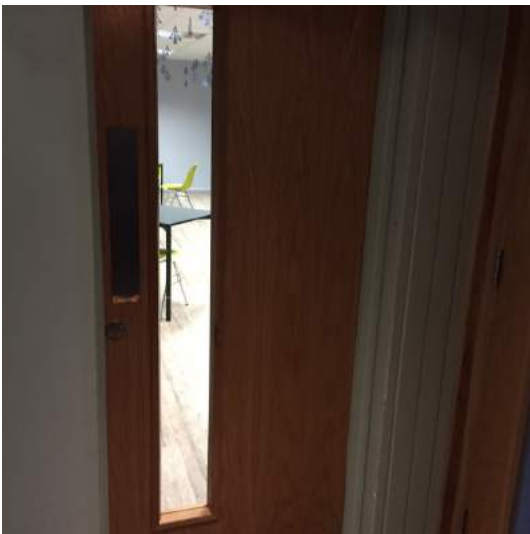
Good to know

Chill-Out Area

If you want to leave the auditorium at any time during the performance, there is a chill-out area that you can visit. You can relax here if you need a little break before going back in to watch the performance. You can ask the ushers where the chill-out area is and they will show you the way.

Please note this area is not always available due to bookings in Nuffield Kitchen. To find out which performances will have access to this space, please contact Clare White, Theatre and Events Manager: clare.white@nstheatres.co.uk

Here are some pictures of it:



Familiarisation Visit

If you want to visit the theatre and see your seat before the performance, you can arrange a visit.

To organise this please email Clare White: clare.white@nstheatres.co.uk

or Tracey Cruickshank: tracey.cruickshank@nstheatres.co.uk

